

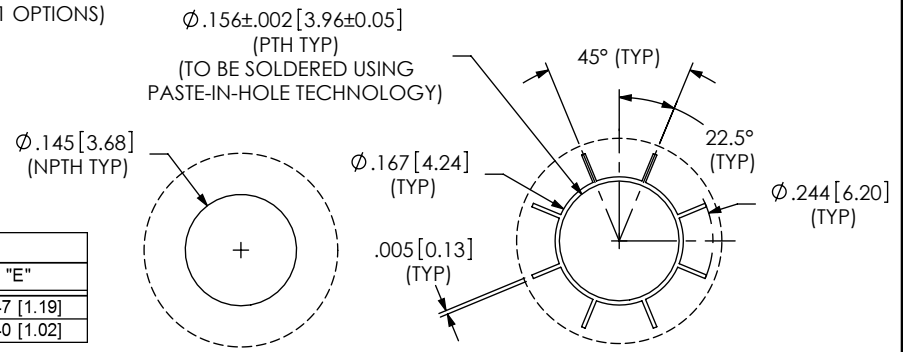
FIG 1  
FOOTPRINT FOR QSH-060-01-X-D-XXX SHOWN

- NOTES:
1. ALL DIMENSIONS ARE SYMMETRIC ABOUT THE CENTERLINE.
  2. CONNECTOR ENVELOPE DIMENSIONS, OTHER COMPONENTS PLACED ON PCB SHALL AVOID THIS ZONE.
  3. FOR -SD/-DS OPTIONS, PLEASE REFER TO THE "QXXX WITH SCREW-DOWN OPTIONS" APPLICATION DRAWING.

OPTION	"D"
-GP	.221 [5.61]
-RT1	.279 [7.08]

OPTION	"E"
-LC	.047 [1.19]
-A	.040 [1.02]

No OF POS	"A"				"B"		"C"	
	-LC & -A	-FL	-GP	-RT1	-LC & -A	-GP	-RT1	
-030	.839 [21.31]	.803 [20.38]	1.216 [30.89]	1.438 [36.53]	.793 [20.13]	1.013 [25.73]	1.129 [28.68]	
-060	1.627 [41.31]	1.590 [40.39]	2.004 [50.89]	2.226 [56.53]	1.580 [40.13]	1.801 [45.73]	1.917 [48.68]	
-090	2.417 [61.38]	2.378 [60.39]	2.791 [70.89]	3.013 [76.53]	2.368 [60.13]	2.588 [65.74]	2.704 [68.68]	
-120	3.204 [81.38]	3.165 [80.39]	3.579 [90.89]	N/A	3.155 [80.14]	3.376 [85.74]	N/A	
-150	3.991 [101.37]	3.953 [100.39]	4.366 [110.90]	N/A	3.943 [100.14]	4.163 [105.74]	N/A	



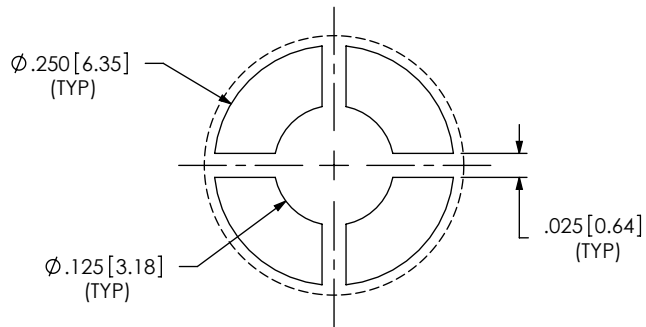
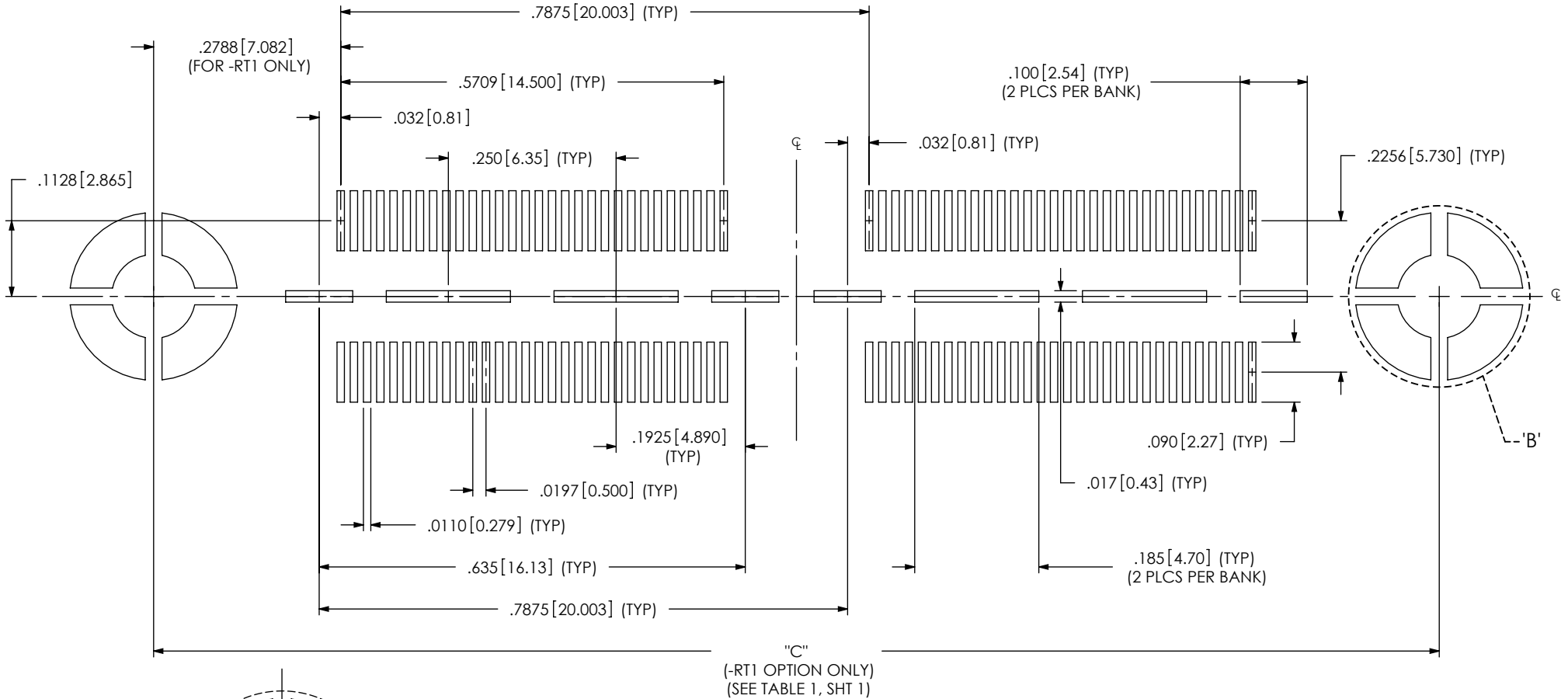
-GP OPTION:  
DETAIL 'A'  
SCALE 4:1

-RT1 OPTION:  
DETAIL 'A'  
SCALE 4:1

PROPRIETARY NOTE  
THIS DOCUMENT CONTAINS INFORMATION CONFIDENTIAL AND PROPRIETARY TO SAMTEC, INC. AND SHALL NOT BE REPRODUCED OR TRANSFERRED TO OTHER DOCUMENTS OR DISCLOSED TO OTHERS OR USED FOR ANY PURPOSE OTHER THAN THAT WHICH IT WAS OBTAINED WITHOUT THE EXPRESSED WRITTEN CONSENT OF SAMTEC, INC.

**samtec**  
520 PARK EAST BLVD, NEW ALBANY, IN 47150  
PHONE: 812-944-6733 FAX: 812-948-5047  
e-Mail info@SAMTEC.com code 55322

NOTES:  
1. STENCIL TO BE .0060[.152] THICK.



-RT1 OPTION ONLY:  
DETAIL 'B'  
SCALE 5 : 1

FIG 2  
STENCIL FOR QSH-060-01-X-D-XXX SHOWN

"C"  
(-RT1 OPTION ONLY)  
(SEE TABLE 1, SHT 1)

**PROPRIETARY NOTE**  
THIS DOCUMENT CONTAINS INFORMATION  
CONFIDENTIAL AND PROPRIETARY TO  
SAMTEC, INC. AND SHALL NOT BE REPRODUCED  
OR TRANSFERRED TO OTHER DOCUMENTS OR  
DISCLOSED TO OTHERS OR USED FOR ANY  
PURPOSE OTHER THAN THAT WHICH IT WAS  
OBTAINED WITHOUT THE EXPRESSED WRITTEN  
CONSENT OF SAMTEC, INC.



520 PARK EAST BLVD, NEW ALBANY, IN 47150  
PHONE: 812-944-6733 FAX: 812-948-5047  
e-Mail info@SAMTEC.com code 55322

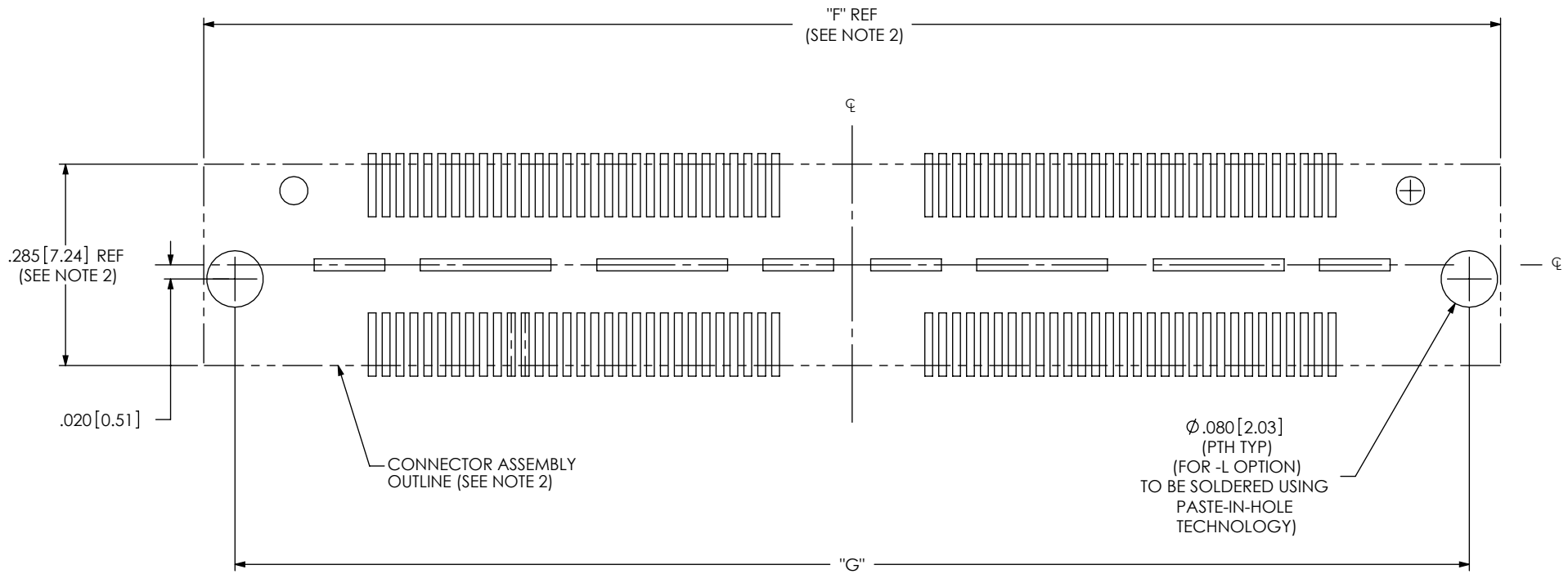


FIG 3  
-L OPTION  
FOOTPRINT FOR QSH-060-01-X-D-A-L SHOWN  
(SAME AS FIG 1, EXCEPT AS SHOWN)

TABLE 4

No OF POS	"F"	"G"
-030	1.048 [26.62]	.959 [24.36]
-060	1.836 [46.62]	1.747 [44.36]
-090	2.623 [66.62]	2.534 [64.36]
-120	3.411 [86.63]	3.322 [84.37]
150	4.198 [106.63]	4.109 [104.37]

PROPRIETARY NOTE

THIS DOCUMENT CONTAINS INFORMATION CONFIDENTIAL AND PROPRIETARY TO SAMTEC, INC. AND SHALL NOT BE REPRODUCED OR TRANSFERRED TO OTHER DOCUMENTS OR DISCLOSED TO OTHERS OR USED FOR ANY PURPOSE OTHER THAN THAT WHICH IT WAS OBTAINED WITHOUT THE EXPRESSED WRITTEN CONSENT OF SAMTEC, INC.



520 PARK EAST BLVD, NEW ALBANY, IN 47150  
PHONE: 812-944-6733 FAX: 812-948-5047  
e-Mail info@SAMTEC.com code 55322

NOTES:  
1. STENCIL TO BE .0060[.152] THICK

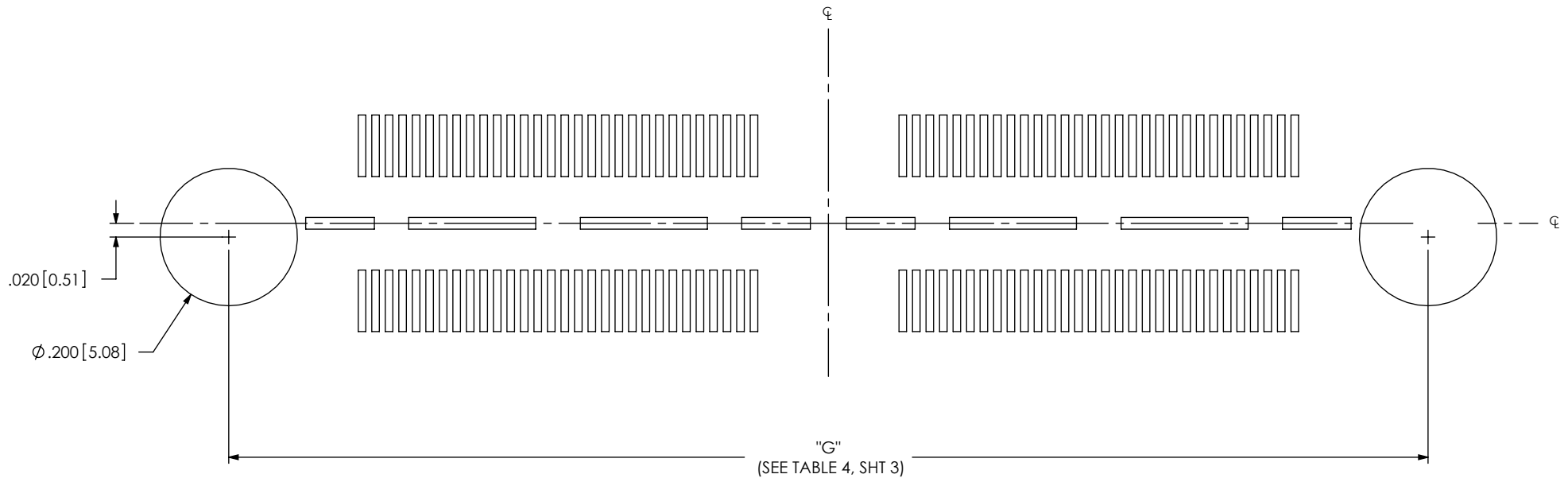


FIG 4  
-L OPTION  
STENCIL FOR QSH-060-01-X-D-A-L SHOWN  
(SAME AS FIG 2, EXCEPT AS SHOWN)

**PROPRIETARY NOTE**  
THIS DOCUMENT CONTAINS INFORMATION  
CONFIDENTIAL AND PROPRIETARY TO  
SAMTEC, INC. AND SHALL NOT BE REPRODUCED  
OR TRANSFERRED TO OTHER DOCUMENTS OR  
DISCLOSED TO OTHERS OR USED FOR ANY  
PURPOSE OTHER THAN THAT WHICH IT WAS  
OBTAINED WITHOUT THE EXPRESSED WRITTEN  
CONSENT OF SAMTEC, INC.



520 PARK EAST BLVD, NEW ALBANY, IN 47150  
PHONE: 812-944-6733 FAX: 812-948-5047  
e-Mail info@SAMTEC.com code 55322