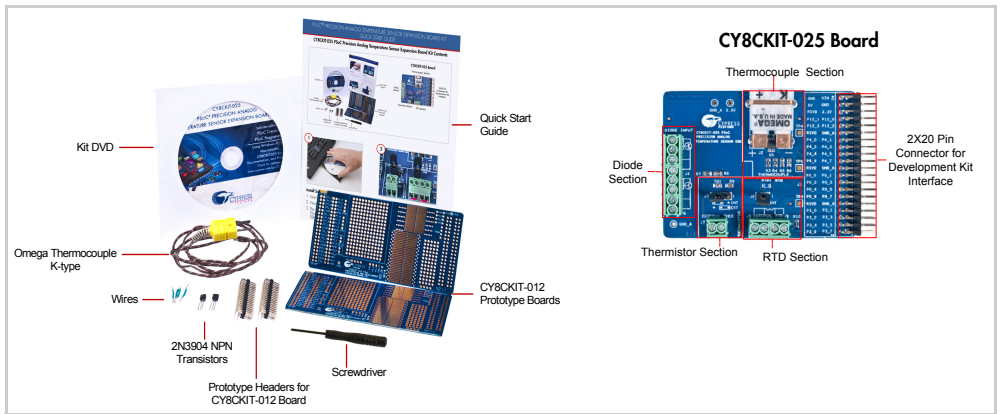
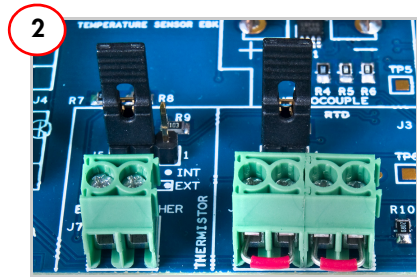


## CY8CKIT-025 PSOC Precision Analog Temperature Sensor Expansion Board Kit Contents



### Install Software

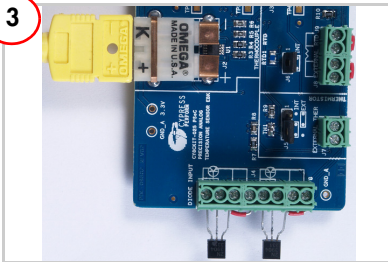
1. Insert the kit DVD and install the kit software.
2. Refer to the CY8CKIT-025 Kit Guide for detailed installation instructions.
3. The projects will be installed at C:\Program Files\Cypress\PSOC Precision Analog EBK\2.0\.



### Board Setup

1. Verify that jumper J6 is installed for RTD measurement.
2. Verify that jumper J5 is installed between pins 2 and 3 to use the thermistor on board.

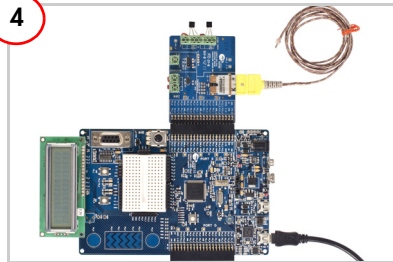
3



## Board Setup

1. Connect the thermocouple at connector J2.
2. Connect 2N3904 transistors at connector J4 for diode measurement.

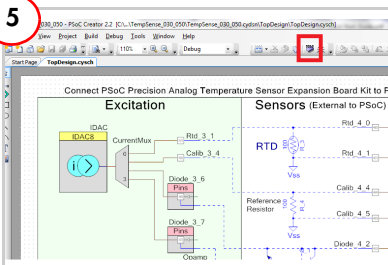
4



## Connect with PSoC 3/PSoC 5 Development Kit

1. Connect the CY8CKIT-025 Expansion Board Kit to Port E of the CY8CKIT-030 PSoC 3 Development Kit/CY8CKIT-050 PSoC 5LP Development Kit.
2. Power the CY8CKIT-030/CY8CKIT-050 by connecting the USB cable at J1.

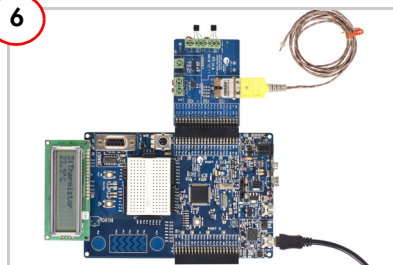
5



## Program the PSoC Device

1. Open TempSense\_030\_050.cywrk from PSoC Creator Start Page > Examples and Kits > Kits > PSoC Precision Analog EBK.  
Use TempSense\_001 for CY8CKIT001.
2. Select the location for the example project.
3. To use the project with PSoC 5LP, open the Device Selector from Project menu and select **CY8C5868AXI-LP035**.
4. Click the **Program** icon in PSoC Creator.
5. Press Reset button on board to restart the kit.

6



## Test the Expansion Board Kit

1. LCD shows the temperature reading.
2. Use the P5\_5 and P5\_6 CapSense buttons on CY8CKIT-030/CY8CKIT-050 to select temperature display of different sensors.  
Note: For CY8CKIT001, use the **PO\_5** and **PO\_6** CapSense buttons.
3. Refer to the CY8CKIT025 Kit Guide for information on kit operation and additional example projects.

For the latest information about this kit, visit  
<http://www.cypress.com/go/CY8CKIT-025>

